

February 7, 2025

TOKYU LAND CORPORATION
Scrum Studio Inc.

Community platform for Deeptech startups

“SAKURA DEEPTECH SHIBUYA” officially opens**Official launch event features MIT professors, experts, and startups**

TOKYU LAND CORPORATION (hereinafter referred to as "TLC") is pleased to announce the opening of SAKURA DEEPTECH SHIBUYA (hereinafter referred to as "SDS"), one of Japan's largest community hubs for startups in the deeptech field in Shibuya Sakura Stage on January 23, 2025. SDS hosted the opening event “DEEPTECH INNOVATORS DAY 2025” on the same day.

**■ What is SAKURA DEEPTECH SHIBUYA?**

“SAKURA DEEPTECH SHIBUYA” is one of the largest community platforms in Japan for nurturing and supporting startups in the deeptech field. The platform fosters the creation of new industries by providing a physical space for startups to grow, funding opportunities, and avenues for collaboration with various players in industry, government, and academia.

SDS offers a variety of support through domestic and international industry-government-academia partnerships. The initiative will collaborate with top-tier professors from the Massachusetts Institute of Technology (hereinafter referred to as “MIT”)*⁽¹⁾, the MIT Industrial Liaison Program, Scrum Studio (hereinafter referred to as “Scrum”), the operator of the accelerator program, and develop a learning community to build a network with various startups and sponsoring business companies in Japan and overseas. The initiative will develop a learning community that builds a network with various startups and corporate sponsors in Japan and abroad. SDS is more than just a space, it is a support network for business expansion and a hub for startups to collaborate with the international community. The goal is to build a global innovation ecosystem in the Greater Shibuya area.*⁽²⁾

For more information, please refer to SAKURA DEEPTECH SHIBUYA's future events and activities.

1 *Signed an individual contract with professors at MIT for advice and general supervision.

2 *The Greater Shibuya Area covers an area within a 2.5 km radius from Shibuya Station, as defined in the Tokyu Group's Shibuya urban development strategy.

■ Facility Overview

Name: SAKURA DEEPTech SHIBUYA -Global Innovation Hub-

Location: Shibuya Sakura Stage Central Building, 12th Floor (Location: 1-2 Sakuragaoka-cho, Shibuya-ku, Tokyo)

Opening date: January 23, 2025

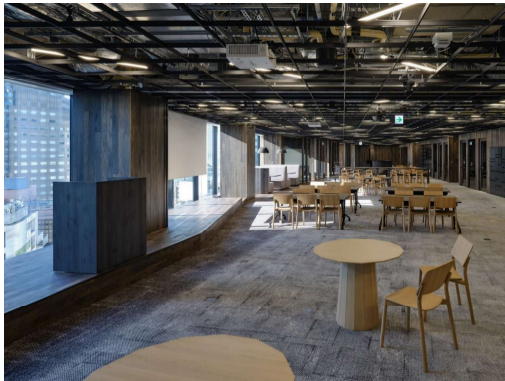
Floor area: 778 m²

Target areas: Energy, Fuels, Materials, Chemicals, AI, Robotics, others

Key Features:

- Japan's largest Deeptech startup ecosystems
- Accelerator program advised by professors from MIT
- Support through industry-government-academia collaboration in Japan and abroad
- Business co-creation with large corporates and investment opportunities from VCs
- Support for overseas startups to expand into Japan and Asia, and support for Japanese startups to expand overseas, etc.

Website: <https://www.sakuradeeptechshibuya.com/en/>



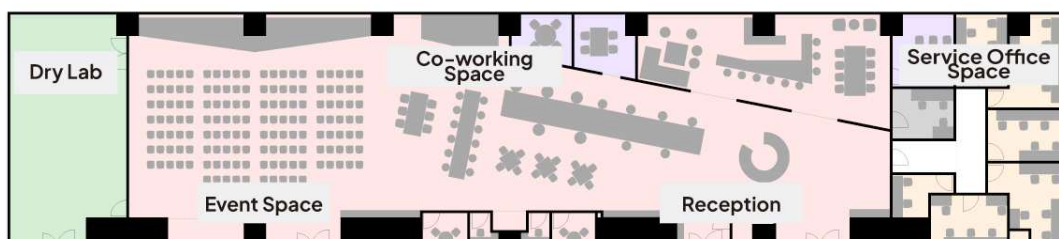
Co-working Space



Co-working Space

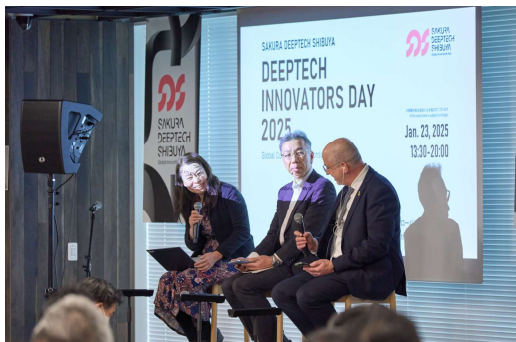


Event Space



■Launch event: "DEEPTECH INNOVATORS DAY 2025"

On Thursday, January 23, 2025, to celebrate the opening of the facility, "DEEPTECH INNOVATORS DAY 2025" was co-sponsored with MIT ILP, attracting over 1,000 participants.



At the opening event, Professor Kripa K. Varanasi from the MIT Mechanical Engineering Department gave a keynote speech titled "The Current State of the Deeptech Ecosystem." Drawing on global case studies, he discussed global trends in energy and biotech, including examples from overseas. Other prominent speakers provided their opinions on topics such as “the current situation regarding the challenges of spreading deeptech to the market and government and private sector support” and “the challenges facing deeptech startups in Japan.”



The following panel session featured "Robotics & AI" and "Climate Tech" which are the target areas for the accelerator program run by Scrum. In this session, global startup founders talked about their founding stories and insights into deeptech innovation, including Professor Hermano Igo Krebs, SDS advisor and Professor at the MIT Mechanical Engineering Department; Dr. Luis Sentis, co-founder of [ApptroNIK](#), a humanoid robotics company that also featured in this year’s Consumer Electronics Show (CES), Dr. Brian Baynes, co-founder of carbon capture startup [Verdox](#); and Evan Haas, Founder and CEO of a CO2 utilization startup [Helix Carbon](#). The conference portion concluded with case studies of the forefront of large-scale innovation exploration by advanced science and technology (quantum computing) and large corporations.

Takeshi Hasebe, Mayor of Shibuya Ward, delivered a message on the opening of SDS and the efforts of the ward toward startup co-creation. The event concluded with a lively reception attended by many participants.

The event will be released on SDS’s Youtube Channel (<https://www.youtube.com/@sakura-deeptech-shibuya>).

SDS plans to host events for corporates, startups, VCs, and academia in the near future. Please visit the official SDS website for details.



Speakers

KEYNOTE SPEECH The current state of the DEEPTECH ecosystem



Kripa K. Varanasi
MIT, Mechanical Engineering Department
Professor

OPINIONS SALON Future insights into the DEEPTECH field



Osamu Aruga
Director for Technology and
Innovation Policy, Cabinet Office



Gil Granot-Mayer
Okinawa Institute of Science and
Technology, Executive Vice
President



Tomoko SUGANO
The University of Tokyo,
Professor



Masaharu Tsujimoto
Institute of Science Tokyo,
Professor



Akie Iriyama
Waseda Business School,
Professor



Yoko Fukata
Sony Ventures Corporation,
Investment Director



Shiho Watabe
Shibuya Startups KK, President



【Special Greetings】
Ken Hasebe
Shibuya Mayor

ACCELERATION DEEPTECH PRESENTATIONS & PANEL DISCUSSIONS



Hermano Igo Krebs
MIT, Mechanical Engineering
Department Principal Research
Scientist and Lecturer



Luis Sentis
Aptronik Co-Founder and
Scientific Advisor



Brian Baynes
Verdorex
Co-Founder



Evan Haas
Co-Founder & CEO,
Helix Carbon



Michael Yan
Scrum Ventures, Managing
Director and Head of
Technical Investments

COMMUNITY

Deeptech [Quantum Computers] × Forefront of the Research for Large-scale Innovations by Enterprises



Matt Terabe
Deloitte Tohmatsu Group,
Chief of Quantum
Technology



Qi Gao
Mitsubishi Chemical
Corporation,
Science & Innovation Center
Senior Chief Scientist



Sakoda Kenkichi
MEXT, Director
Office of university-industry
collaboration and
university venture support
Science and Technology Policy Bureau

■Comments by MIT Hermano Igo Krebs

When I think about the future, when I think about Japan, when I think about a “brave new world,” I visualize Shibuya Crossing. It is somehow exciting that a vision becomes reality at SAKURA DEEPTECH SHIBUYA, a place where creativity, energy, and “can-do-attitude” come together to let us all dream about a future that goes to Mars and beyond. And I am excited to be part of this vision.



■Call for Applications: Global Deeptech Startups

The accelerator in SDS is a global accelerator program that supports deeptech startups with world-class partners. The Four Pillars of the program are “Global,” “Top-Tier Deeptech Mentorship Circle,” “Shibuya Culture,” and a “Leading Corporate Community.”

Scrum Studio, known for its proven track record of startup investment and open innovation in the deeptech domain such as climate tech, AI and robotics, will manage the accelerator. The accelerator will provide a one-on-one mentorship program for startups and a curriculum for corporate partners to obtain the necessary skills and knowledge required for startup co-creation.

In addition to its accelerator program, SDS fosters a community dedicated to innovation, facilitating the global expansion of Japanese startups and aiding foreign startups entering Japan and Asia. Key features of the Learning and Community include: Expert-led study sessions on specialized deeptech topics, lectures on global deeptech investment trends, and matching events for post-doctorates, students, and companies.

For more information and entry requirements, please visit the website.

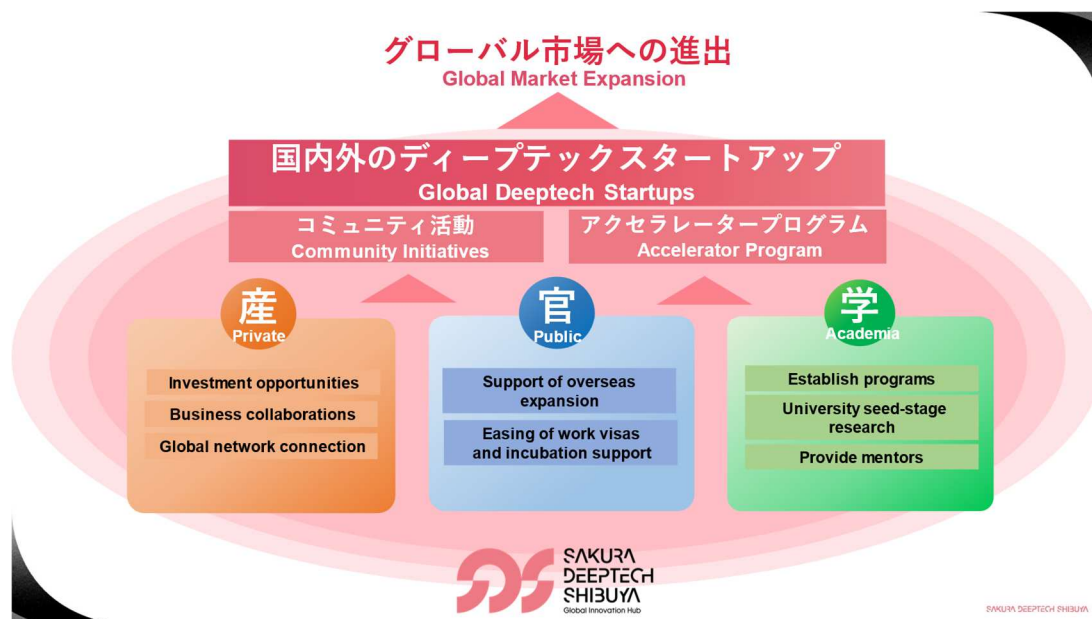
Applications now open:

- Stage: Early-growth stage startups (startups that have reached PMF*)
- Geography: Global (Japan and Overseas)
- Target areas: “Climate Tech” and “AI & Robotics”

Website: <https://www.sakuradeeptechshibuya.com/en/accelerator/>

Application: <https://tinyurl.com/4ra7hj23>

3* Product market fit = state in which a product that is offered addresses a customer issue and is accepted by the appropriate market.



■Partners

MIT Industrial Liaison Program, Dynamo Energy Hub, Inc., Hello Tomorrow Japan, Brinc Japan Ltd., Apprecia Capital, UTokyo Innovation Platform Co., Ltd. Kyushu University Open Innovation Platform Co., Ltd., Okinawa Institute of Science and Technology, Beyond Next Ventures Inc., Japan External Trade Organization, Tokyo Innovation Base, Shibuya City Office ...and more



DYNAMO

brinc



Apprecia Capital



東大IPC

Innovation Platform
for The University of Tokyo



OIST



Beyond
Next
Ventures

JETRO

Japan External Trade Organization



hello
tomorrow
JAPAN

TiB

Tokyo
Innovation
Base



渋谷区
Shibuya City

■Company Overview:

▼ TOKYU LAND CORPORATION

Address: SHIBUYA SOLASTA, 1-21-1 Dogenzaka, Shibuya-ku, Tokyo

CEO: Hiroaki Hoshino

Year of Establishment: 1953

Website: <https://www.tokyu-land.co.jp/english/>

▼ Scrum Studio Inc.

Address: 1-1-1 Nishi-Shinbashi, Minato-ku, Tokyo

President: Masami Takahashi

Year of Establishment: 2020

Website: <https://scrum.vc/>